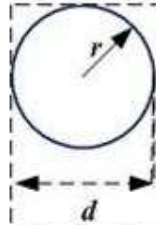


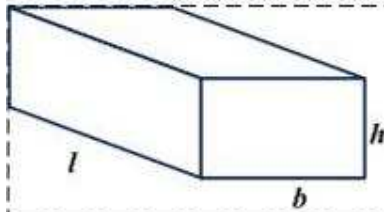
Omtrek:  $O = 2l + 2b$

Oppervlak:  $A = l \cdot b$



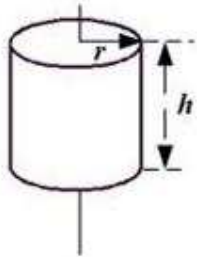
Omtrek:  $O = \pi \cdot d = 2\pi \cdot r$

Oppervlak:  $A = \pi r^2$



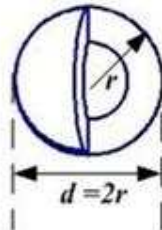
Volume:  $V = l \cdot b \cdot h$

Oppervlak:  $A = 2 l \cdot b + 2 h \cdot b + 2 l \cdot h$



Volume:  $V = \pi r^2 h$

Oppervlak:  $A = 2\pi r^2 + 2\pi \cdot r \cdot h$



Volume:  $V = 1/6 \pi d^3$

Oppervlak:  $A = 4 \pi r^2$